



**ARRGH!**

on Artists & Illustrative Designers Agents.

W1T 4RJ. United Kingdom. Tel: +44 20 7636 1064

NY, NY 10012. Tel: +1 212 995 5044

email: [info@debutart.com](mailto:info@debutart.com) • [www.debutart.com](http://www.debutart.com) • [www.twitter.com/debutart](http://www.twitter.com/debutart)



**SKATEBOARD AUCTION / 2 WINGATES GALLERY**

on Artists & Illustrative Designers Agents.

W1T 4RJ. United Kingdom. Tel: +44 20 7636 1064

NY, NY 10012. Tel: +1 212 995 5044

email: [info@debutart.com](mailto:info@debutart.com) • [www.debutart.com](http://www.debutart.com) • [www.twitter.com/debutart](http://www.twitter.com/debutart)

ONE MINUTE TO MIDNIGHT AND I WAS STILL AWAKE...



ONE MINUTE TO MIDNIGHT / MENOPAUSE AWARENESS

Commissioned by Debut Art, an Association of Illustration Artists & Illustrative Designers Agents.

100 W 11th St, New York, NY 10012. United Kingdom. Tel: +44 20 7636 1064

USA. Tel: +1 212 995 5044



**BANK DETAILS**

on Artists & Illustrative Designers Agents.

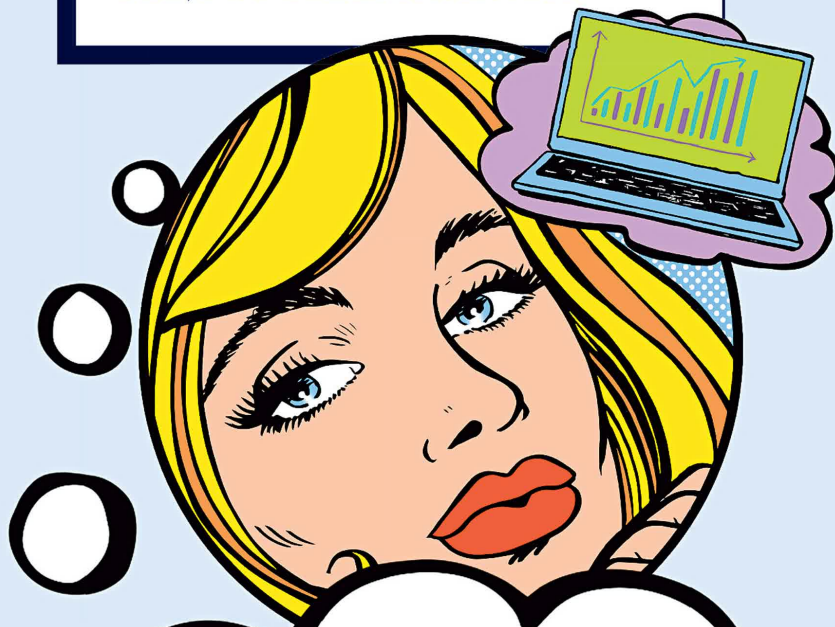
W1T 4RJ. United Kingdom. Tel: +44 20 7636 1064

E, NY 10012. Tel: +1 212 995 5044

email: [info@debutart.com](mailto:info@debutart.com) • [www.debutart.com](http://www.debutart.com) • [www.twitter.com/debutart](http://www.twitter.com/debutart)

## ISA or bike?

Janet's boyfriend has received  
a £5,000 bonus from work



*I KNOW CHARLES HAS HIS EYE  
ON A NEW ROAD BIKE. BUT  
IT'S SO EXPENSIVE! AND IT  
SEEMS SILLY TO SPEND ALL  
HIS BONUS IN ONE GO. I WISH  
HE'D PUT THAT MONEY ASIDE  
FOR OUR FUTURE...*

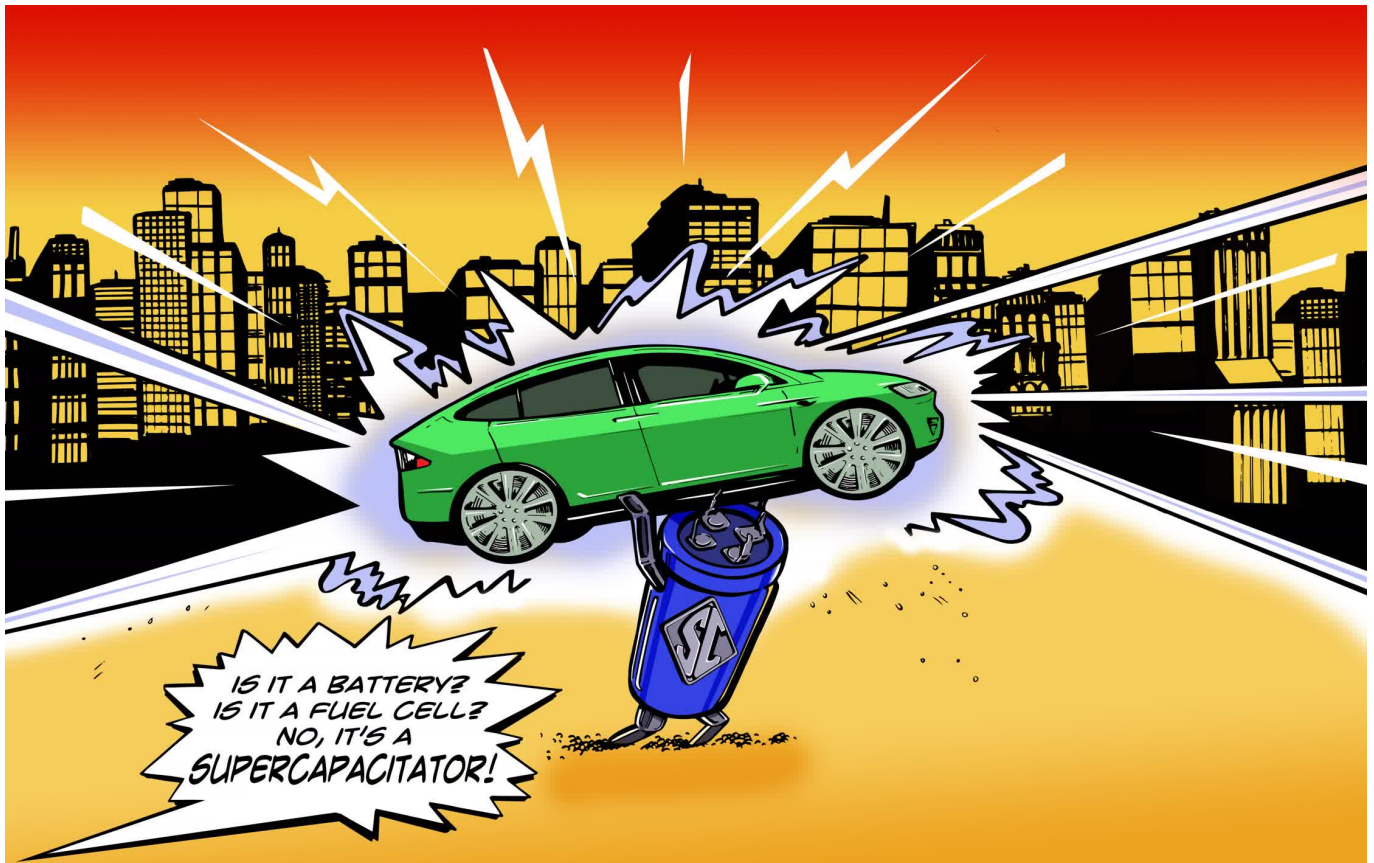
**DÉBUT  
ART**

**FINANCIAL COMPATIBILITY / THE INVESTOR**

Commissioning Artists & Illustrative Designers Agents.

100, W1T 4RJ, United Kingdom. Tel: +44 20 7636 1064

100, W1T 4RJ, United Kingdom. Tel: +1 212 995 5044



**SUPERCAPACITOR / CHEMISTRY WORLD MAGAZINE**

on Artists & Illustrative Designers Agents.

W1T 4RJ. United Kingdom. Tel: +44 20 7636 1064

NY, NY 10012. Tel: +1 212 995 5044

email: [info@debutart.com](mailto:info@debutart.com) • [www.debutart.com](http://www.debutart.com) • [www.twitter.com/debutart](http://www.twitter.com/debutart)



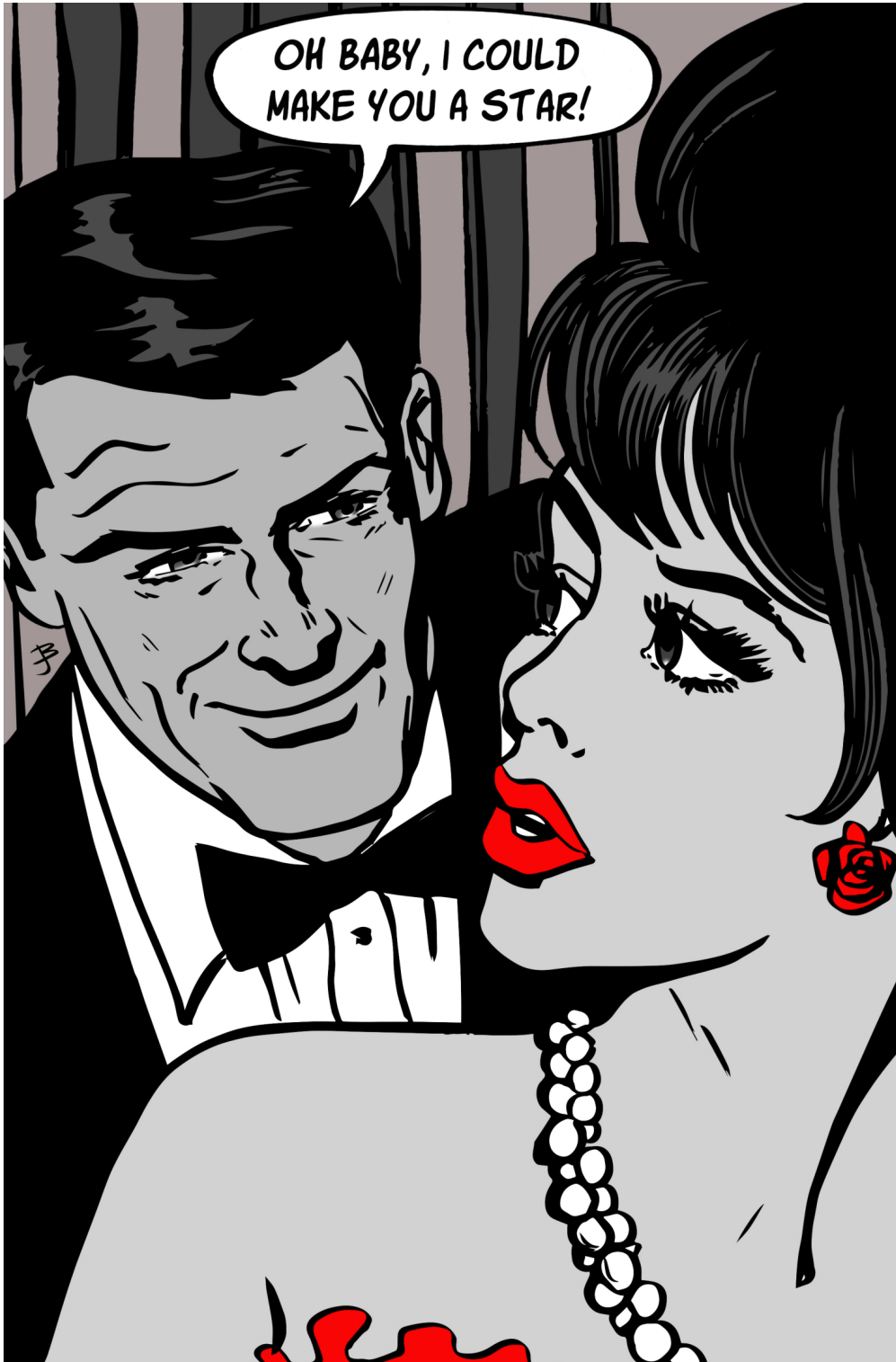
RENTAL CONTROL SOCIAL MEDIA / CHOICES MAGAZINE

on Artists & Illustrative Designers Agents.

W1T 4RJ. United Kingdom. Tel: +44 20 7636 1064

NY, NY 10012. Tel: +1 212 995 5044

email: [info@debutart.com](mailto:info@debutart.com) • [www.debutart.com](http://www.debutart.com) • [www.twitter.com/debutart](http://www.twitter.com/debutart)



EEP

on Artists & Illustrative Designers Agents.

W1T 4RJ. United Kingdom. Tel: +44 20 7636 1064

E, NY 10012. Tel: +1 212 995 5044

email: [info@debutart.com](mailto:info@debutart.com) • [www.debutart.com](http://www.debutart.com) • [www.twitter.com/debutart](http://www.twitter.com/debutart)





## What is the deadliest sin ?

THE BIG QUESTION

To err is to be human, but some sins transgress all boundaries. Seven writers pick their worst but first, **Rosie Blau** introduces the hellfires

A FOURTH CENTURY Greek monk's list of eight "evil thoughts", ordered in ascending wickedness, ranks among humanity's earliest league tables. Nearly 2000 years later, Pope Gregory the Great revised it into the seven deadly sins we know today: sloth, wrath, gluttony, envy, lust, greed and pride.

This catalogue of vices has turned out to be far more compelling than the seven heavenly virtues they are sometimes pitted against. The church has been their strongest proponent; frescoes in the Middle Ages and Renaissance commonly depicted the sins, as well as the hell fires that befell miscreants. They inspired Dante's *Inferno*, Spenser's *The Faerie Queene*, Chaucer and Marlowe. More recently films, ballets, an opera, and even a series of limited-edition ice creams, have savoured their potency.

Some, such as lust and sloth, seem relatively inoffensive to modern sensibilities; a contemporary list might instead include cruelty or hatred, abuse or exploitation. Other sins are strangely prescient – only now, in our ever fatter world, have we taken gluttony to its logical, deadly extreme.

The power of these sins is that each is a human frailty, common to us all; each day we lead ourselves into temptation. Though fewer of us now believe we will be cast into the flames if we err, the list still reflects something of the codes by which we live. As the choices of our seven contributors show – and they have not restricted themselves to traditional transgressions – sometimes apparently mild misdeeds become glaring wrongs when taken to their limits.

### ENVY

By **Richard Holloway**

The best definition of sin is a Greek archery term for missing the mark. We aim to do the right thing, gain a positive end, even if it's only some sort of pleasure, but our arrow veers off and instead of the bull's eye we hit someone in the field beyond. In other words, our mistakes are usually misdirected attempts at the good rather than intentional pursuit of the bad. But there is one exception to this positive understanding of sin: envy.

Every other sin offers some gratification, if only in its early stages, but envy is an empty and desolating experience from beginning to end. It is the meanest sin in the book, which is why few people ever own up to it. Francois de La Rochefoucauld captured its joyless secrecy perfectly in 1663: "We often pride ourselves on even the most criminal passions, but envy is a timid and shame-faced passion we never dare acknowledge." Virginia Woolf thought it was the besetting sin of writers, and Gore Vidal agreed with her. Whenever a friend succeeded, he wrote, a little something in him died; for him it was not enough to succeed – others had to fail. Gore Vidal's spleen captures both aspects of envy: it is both sorrow at another's good and satisfaction at another's misfortune, what the Germans call *schadenfreude*, shame-joy, pleasure in the distress of others.

The most obvious symptom of envy is malice. However witty and entertaining you may find their skillful dimming of the reputations of others, you can be certain that the malicious person is being eaten >

ILLUSTRATIONS: JACQUE BOYD

609



DEADLY SINS. ENVY / THE ECONOMIST

on Artists & Illustrative Designers Agents.

W1T 4RJ, United Kingdom. Tel: +44 20 7636 1064

NY 10012. Tel: +1 212 995 5044

email: [info@debutart.com](mailto:info@debutart.com) • [www.debutart.com](http://www.debutart.com) • [www.twitter.com/debutart](http://www.twitter.com/debutart)



**RE FUN**

on Artists & Illustrative Designers Agents.

W1T 4RJ. United Kingdom. Tel: +44 20 7636 1064

E, NY 10012. Tel: +1 212 995 5044

email: [info@debutart.com](mailto:info@debutart.com) • [www.debutart.com](http://www.debutart.com) • [www.twitter.com/debutart](http://www.twitter.com/debutart)



UH-OH... MY BAD!

on Artists & Illustrative Designers Agents.

W1T 4RJ. United Kingdom. Tel: +44 20 7636 1064

NY, NY 10012. Tel: +1 212 995 5044

email: [info@debutart.com](mailto:info@debutart.com) • [www.debutart.com](http://www.debutart.com) • [www.twitter.com/debutart](http://www.twitter.com/debutart)

**Oprah!**  
The interviewer turned therapist  
This section

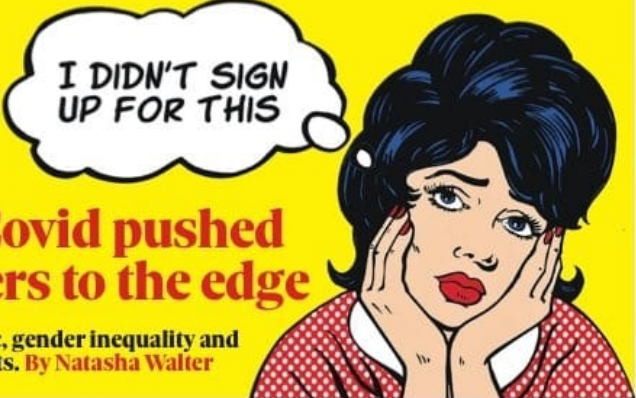


In the New Review

**I DIDN'T SIGN UP FOR THIS**

**How Covid pushed mothers to the edge**

The pandemic, gender inequality and women's rights. By Natasha Walter



From £1.75 for subscribers  
www.observer.co.uk | Sunday 28 February 2021 | £3.20

# The Observer



## Sunak's £5bn plan to rescue high streets from collapse

- Grants offered to stricken shops and pubs
- NHS fears its pleas for cash will be ignored

**Toby Helm & Denis Campbell**

The chancellor, Rishi Sunak, is to offer 700,000 shops, pubs, restaurants, hotels and other businesses, grants of up to £18,000 each as part of a £5bn rescue scheme to prevent mass bankruptcies.

News of the plan – to be announced in Wednesday's budget – comes as Sunak faces increasing pressure to

avoid or postpone significant corporation tax rises, as companies struggle to weather the latest Covid-19 lockdown in a strong enough state to reopen.

While there were questions last night over the extent to which the grants were extensions to schemes due to finish at the end of March or new beefed-up initiatives, the move reflects growing panic in government that many small firms on the high streets and elsewhere are now on the brink of extinction.

Last week almost 400 leaders of small and medium-sized firms from the "Fighting Back for Business" campaign wrote to the chancellor calling for debts accrued through government-backed loans to be entirely written off to avoid many tens of thousands of companies crashing into insolvency.

Under the budget plans, non-essential retail businesses will be eligible for direct cash grants of up to £6,000 a site to help them start trading again when allowed to do so.

Hospitality, accommodation, leisure, personal care and gym busi-

Continued on page 4 >>

### Farewell to the Captain



Members of the armed forces carrying Captain Sir Tom Moore's coffin yesterday. The 100-year-old retired army officer, who raised more than £30m for the NHS, was buried at a private funeral in Bedford. (Report, page 5) Joe Giddens/Reuters

## Doctors fear new child mental health crisis

**Michael Savage**  
Policy Editor

A surge in child mental health cases is expected to emerge as schools reopen next week, amid warnings of a "crisis on top of a crisis" hitting vulnerable children during the pandemic.

Paediatricians, psychologists and charitable groups providing mental health support all told the Observer they were seeing increasing demand and warned of another surge as lock-

down is lifted. Several reported longer waiting lists for young people in need of help.

Some charitable mental health services said they had seen a 70% rise in demand over the past three months, compared with the previous year. The number experiencing eating disorders, self-harm and even psychosis is causing serious concern. There are also warnings that the crisis is having a disproportionate impact on children in poverty.

Karen Street, officer for mental health at the Royal College of Paediatrics and Child Health, told the Observer: "We are all really worried about what we're already seeing, and really worried about what might be coming. We're seeing an increased presentation to acute hospitals of children in crisis. What we found in the first lockdown is that things seem to go quite quiet on all fronts right

Continued on page 8 >>



WANT GO ON / THE GUARDIAN

on Artists & Illustrative Designers Agents.

W1T 4RJ, United Kingdom. Tel: +44 20 7636 1064

NY, NY 10012. Tel: +1 212 995 5044

email: [info@debutart.com](mailto:info@debutart.com) • [www.debutart.com](http://www.debutart.com) • [www.twitter.com/debutart](https://www.twitter.com/debutart)

